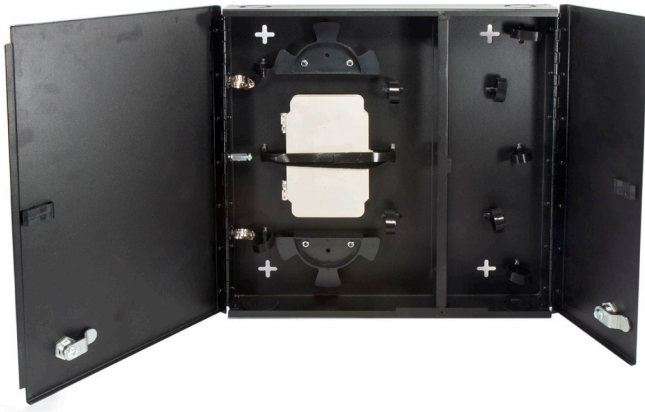


SSF-SWM-SPLIT-WL-E2 Installation

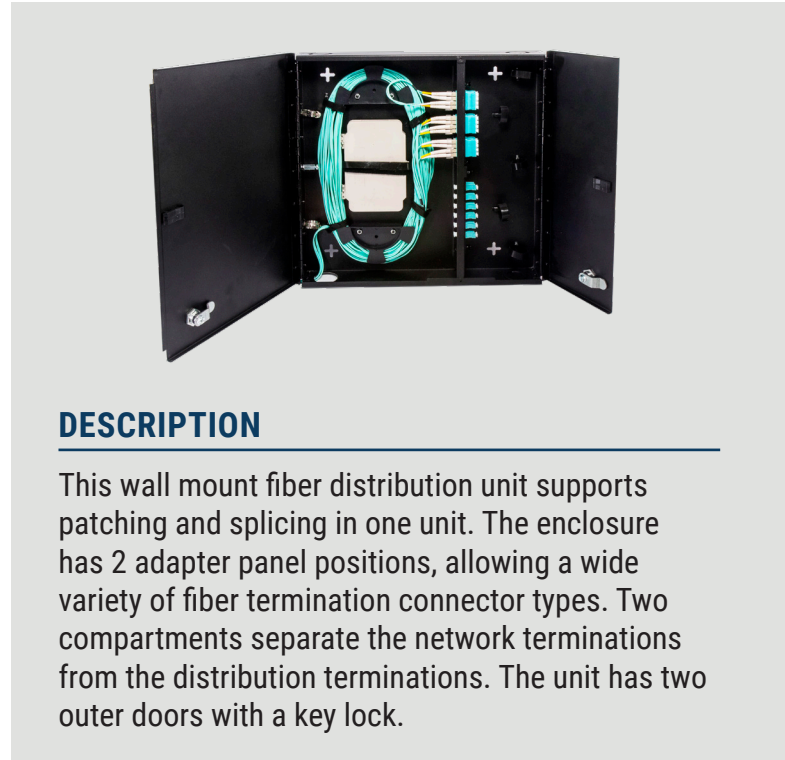
Wall Mount Patch & Splice Fiber Enclosure



FEATURES



- Accommodates up to 2 SSF™ LGX compatible adapter plates or MTP modules
- Split door with lock
- Cable management securing points



DESCRIPTION

This wall mount fiber distribution unit supports patching and splicing in one unit. The enclosure has 2 adapter panel positions, allowing a wide variety of fiber termination connector types. Two compartments separate the network terminations from the distribution terminations. The unit has two outer doors with a key lock.

INSTALLATION

The SSF-SWM-SPLIT-WL-E2 is designed for indoor installation. It can accept up to two SSF™ adapter plates.

1. Select a vertical indoor wall surface with easy access and adequate clearance from other fixtures and power circuits. Installation location should be near a suitable earth ground.

2. Utilize a plywood backer board or fastener anchors as appropriate to the install surface.

3. Mark and install appropriate wall hanging hardware and secure the unit.

