

# Cleerline Ethernet/SFP Switch

1 x SFP to 4 x RJ45 Gigabit Non-managed Switch

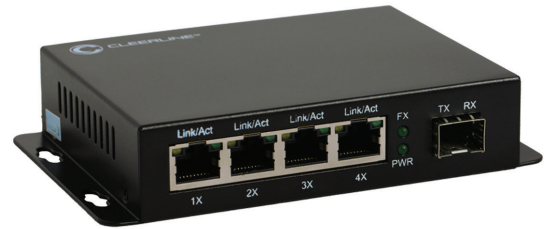


The SSF-1SFPx4RJ45-1G is a 100/1000Base-X to Gigabit Ethernet 10/100/1000Base-T non-managed switch providing a solution to your endpoint devices. The SFP slot allows both Gigabit and Fast Ethernet operation and can accept all SFP types, including Multimode, Single Mode, CWDM, DWDM, or BiDi.

In addition, with its available 4 RJ45 ports the switch helps to provide an overall solution for Ethernet applications in different environments requiring more than 1 ethernet port. This switch also features a slimline housing with built in mounting brackets simplifying installations in tight spaces such as behind TV's, work areas, or other applications.

## FEATURES AND BENEFITS

- 4\*10/100/1000Mbps RJ45 port,UP-Link 1\*1000Mbps SFP port
- Compatible with IEEE802.3AF/AT
- Input Power: 5V1A / 5V2A
- All port supported by MDI/MDIX auto flip and self negotiation
- Supply 4 ea 10/100/1000Mbps adaptive high speed forwarding data packet non-lost port.
- Low heat design, safe and reliable, high stability



## APPLICATION EXAMPLE



| PART NUMBER       | DESCRIPTION   |
|-------------------|---|
| SSF-1SFPx4RJ45-1G | Gigabit switch 1xSFP Slot 1000Base-X, 4xRJ45 Gigabit 10/100/1000Base-Tx, AC US adapter included |

## SPECIFICATIONS

| GENERAL                  |  | OPERATION & DETAILS   |   |
|--------------------------|--|---|---|
| TP ports (RJ45)          | 4 x 10/100/1000 mbps                     | Operating Temp (°C)   | -20 ~ 75                                      |
| SFP slots                | 1 x 100/1000 mbps                        | Operating Humidity  | 90% maximum relative humidity, non-condensing |
| Network Protocols        | IEEE 802.3i 10Base-T                     | Storage Temp (°C)   | -40 ~ 85                                      |
|                          | IEEE 802.3u 100Base-Tx                   | Dimensions (mm) *   | 134 x 82 x 27 mm (L*W*H)                      |
|                          | IEEE 802.3x 1000Base-Tx                  | Weight (g)  | 0.8Kg, G.W: 1.1Kg                             |
|                          | IEEE 802.3 Ethernet Media Access Control | Warranty  | 2 years                                       |
| Data transfer rate       | Fast Ethernet Full / Half Duplex         | * dimensions are taken with no SFPs inserted, or Ethernet connections inserted. |   |
| MAC Address Table        | 16K MAC address                          |   |   |
| Buffer Memory            | 48Kb embedded memory                     |   |   |
| Packet max. size (bytes) | 10K                                      |   |   |
| Safety                   | Present                                  |   |   |
| Power Supply             | AC US 120, 5V                            |   |   |