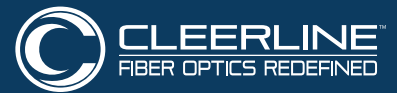
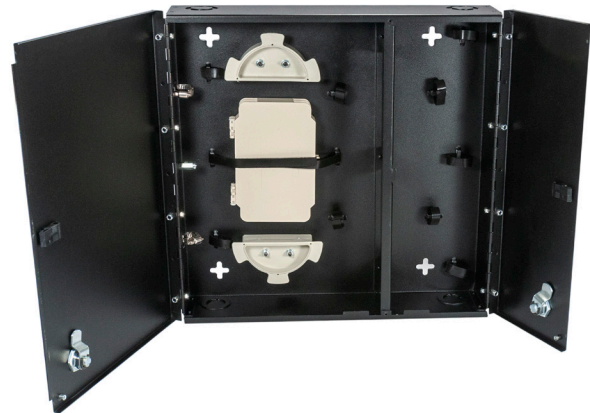


Wall Mount and Patch Enclosure

Part Number: SSF-SWM-SPLIT-WL-E4

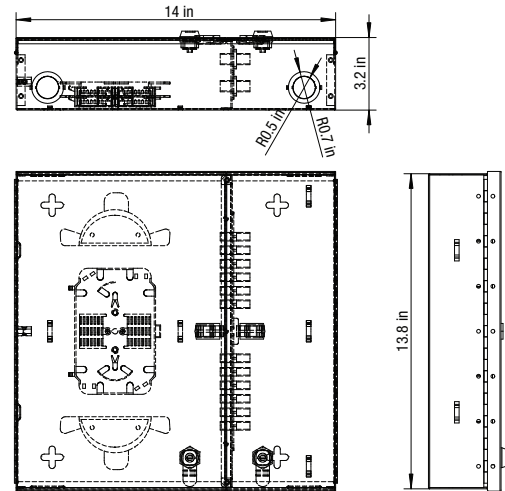


Cleerline SSF™ wall mount fiber distribution units are designed to support patching and splicing in one unit. The enclosure has 4 adapter plates positions, allowing for a wide variety of fiber termination connector types. Two compartments separate the network terminations from the distribution terminations, and the unit has a double outer door with key lock.



FEATURES AND BENEFITS

- Accommodates up to 4 Cleerline™ adapter plates
- LGX-118 compatible adapter plates or MPO cassettes
- Cable entry tie down points
- Double door with key lock
- Top or bottom cable entry
- Compliant with NEMA-2 Standards



SPECIFICATIONS

Adapter Capacity	4
Splice Trays	2
Dimensions	13.8" H x 14" W x 3.2" D
Packaging	16" H x 16" W x 5" D
Weight	7.3 lbs empty
Material	Aluminum, black powder coat
Compatible with	Cleerline™ and LGX-118 adapter plates

PART NUMBER

DESCRIPTION

SSF-MWM-SPLIT-WL-E4	Medium, empty with split metal door, with key lock
---------------------	--