

Cleerline™ small wall mount enclosure accommodates 1 Cleerline™ or LGX® adapter plate.

The enclosure will house inline adapters, pigtailed and splice sleeves.

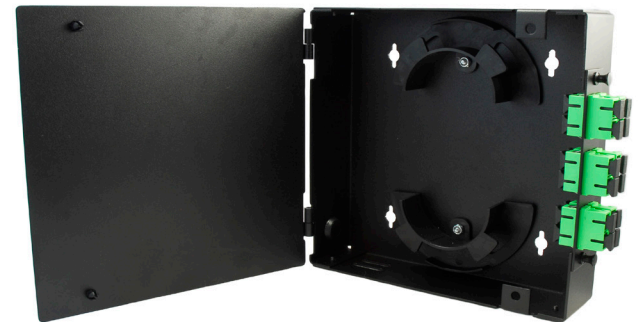
This enclosure features a 3/4" knockout for maximum installation flexibility. The enclosure is fastened via secure plunger-and-grommet type closures.

Adapter plates are sold separately.



FEATURES AND BENEFITS

- Accommodates 1 Cleerline™ adapter plate
- LGX-118 compatible adapter plates or MPO modules
- Durable construction
- Compact design
- Integrated fiber management
- Ideal for data applications



SPECIFICATIONS	
Adapter Capacity	1
Dimensions	8.0"H x 8.0"W x 2.0"D
Weight	1.54 lbs
Compatible with	Cleerline™ and LGX-118 adapter plate

PART NUMBERS	
SSF-SWM-SOLID-NL-E1	Extra small, empty wall mount enclosure. Fits 1 LGX adapter plate.